

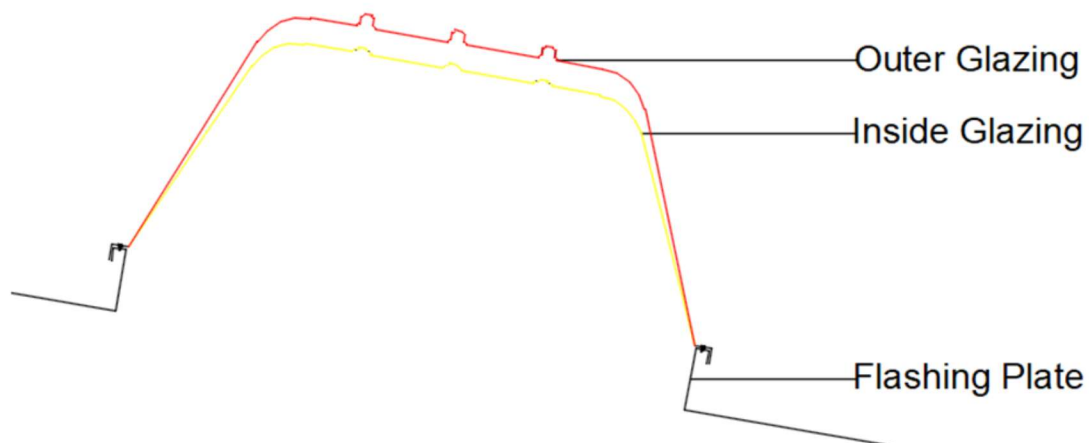
Maxima ADSL - Day Lighting System Specifications

Maxima ADSL is a prismatic skylight that replaces conventional strip/roof lights in industries. It offers reduced heat generation, low-angle light collection, and superior light diffusion, transmission, and dispersion.

Maxima Skylights is a Double/Triple glazing passive solar daylighting system made of high-performance prismatic lens with a light diffuser delivering exceptional daylight to indoor spaces.

Available in Specifications:

1. Double Glazing
2. Triple Glazing



1. Double Glazing:

Outer Glazing: It is a barrel shaped structure that captures sun light from multi direction and redirects towards inside glazing.

Material: A barrel shaped structure light collection system is made up of solid compact, highly durable, UV resistant, Inflammable Prismatic polymeric sheet. Light collection system can be installed in roof top.

Thickness: 3mm thickness sheet is moulded.

Inside Glazing: It is a barrel shaped structure that collects the sun light from the outer glazing and disperse the light uniformly without any bright spot.

Material: It is made up of solid compact, highly durable, UV resistant, Inflammable Opel white polymeric material.

Thickness: 2mm thickness sheet is moulded.

2. Triple Glazing:

Outer Glazing: It is a barrel shaped structure that captures sun light from multi direction and redirects towards intermediate glazing.

Material: A barrel shaped structure light collection system is made up of solid compact, highly durable, UV resistant, Inflammable Prismatic polymeric sheet. Light collection system can be installed in roof top.

Thickness: 3mm thickness sheet is moulded.

Intermediate Glazing: It is a barrel shaped structure that collects the sun light from the outer glazing and disperse the light uniformly without any bright spot.

Material: It is made up of solid compact, highly durable, UV resistant, Inflammable Opel white polymeric material.

Thickness: 2mm thickness sheet is moulded.

Inside Glazing: it is a Flat shaped with rectangular structures that avoid the deposition of dust and other fly material on opal white diffuser. Easy to clean and maintenance.

Material: It is made up of solid compact, highly durable, UV resistant, Inflammable Clear bright polymeric material.

Thickness: 2mm thickness sheet is moulded.

Roof flashing plate:

Material: Metal flashing plate built with 0.6mm thick Galvanized iron sheet, completely welded

Leak proof: The 5mm thick butyl tape and Rubberized PU Sealant are used during the installation to make leak proof.

Fixing: Aluminium rivets / Stainless steel self-thread screw method will be used for fixing.